

Large Ultra HD Signage

UM3C Series

The UM3C Series has been designed to deliver Ultra HD content across large screens, providing clear images, vivid video and crisp text. The UM3C Series supports a divided content layout to show up to 4 split images on one screen, allowing users to effectively deliver different messages at the same time. The UM3C Series is built for spaces such as meeting rooms, hotel lobbies and public spaces. The UM3C has also been Crestron Connected Certified, providing easy connectivity and management in office environments.



Key Points

- Outstanding Ultra HD content playback with embedded HEVC decoder
- Easy collaboration supported by multi screen layout and USB content playback
- Crestron Connected Certification for easy integration into Crestron Connected environments for seamless integrated control
- High-performance webOS with a convenient user interface and makes for easy multi-task execution
- Slim depth and even bezel for sleek look and easy installation

Ultra HD Large Display

UM3C Series

Key Features

Outstanding Picture Quality

ULTRA HD

Ultra HD Resolution

Ultra HD large screen delivers an immersive viewing experience with 4 times higher definition picture quality than FHD, which enables to describe fine details without distortion. Especially UM3C series ensures stable UHD video playback by supporting HEVC* that offers double data compression ratio at the same level of video quality compared to the conventional H.264.

*HEVC: High Efficiency Video Coding



Convenience & Connectivity Features

Multiple screen by PBP/PIP

PBP (Picture-By-Picture) features multi screen in a single display with upto 4 input sources, thus maximizing the usability of large UHD display. In addition, PIP (Picture-In-Picture) supports playing both main screen and sub screen at the same time with various layouts, so that users can arrange many different usage scenarios efficiently.



PBP - Landscape



PIP

USB Content Playback and Scheduling

Content can be played and scheduled simply through USB, so additional server connection is not required, enabling easy content management.



Wireless Solution

The UM3C Series supports wireless services for more optimized user experience with built-in Wi-Fi(802.11n). Mirroring supports sharing content among devices on a Wi-Fi network and Soft AP makes the display operate as a wireless access point for other digital devices.



Crestron Connectivity

Crestron Connected Certification

The UM3C Series is Crestron Connected Certified, meaning that you can seamlessly integrate it into Crestron Connected environments.



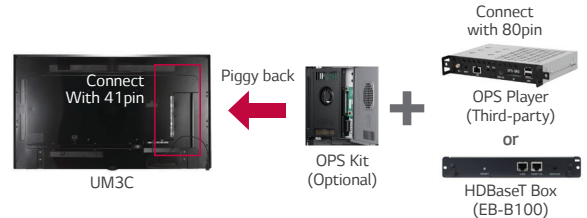
Ultra HD Large Display

UM3C Series

OPS Media Player Compatibility

OPS / HDBaseT Connectivity

The UM3C provides an OPS (Open Pluggable Specification) Kit to connect a third-party OPS player or HDBaseT box. Users have the flexibility to choose any media player as long as it complies with the OPS.



Smart Platform



High-Performance SoC with webOS

Quad Core SoC* can execute several tasks at the same time without a separate media player. Due to its internal memory (8GB), pre-loaded content is displayed without the need for external inputs and/or content displayed without external inputs. In addition, the webOS platform enhances user convenience with intuitive UI and simple app development tools.



*System on Chip

Sleek Design



Slim Depth & Even Bezel

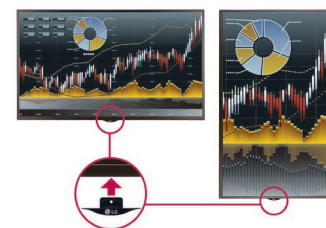
The slim depth and even bezel helps with easy installation and has a sleek look.



*based on 75UM3C model

Detachable Logo

The detachable logo allows for installation in landscape or portrait mode*.



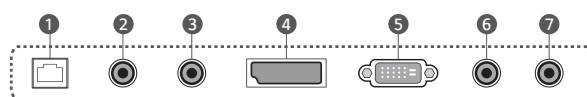
*86UM3C only supports landscape mode.

Connectivity

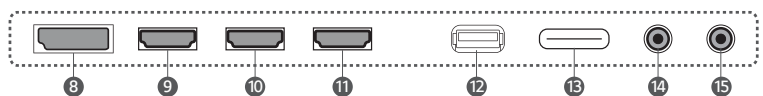
- 1 LAN
- 2 AUDIO IN
- 3 AUDIO OUT (FIXED LEVEL ONLY)
- 4 DP OUT
- 5 DVI-D IN
- 6 PIXEL SENSOR
- 7 IR & LIGHT SENSOR
- 8 DP IN
- 9 HDMI IN 3
- 10 HDMI IN 2
- 11 HDMI IN 1
- 12 USB 3.0 IN
- 13 SD CARD
- 14 RS-232C IN
- 15 RS-232C OUT

86UM3C

Bottom

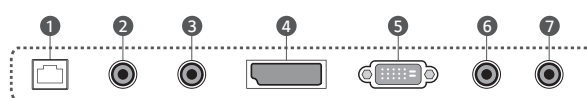


Side

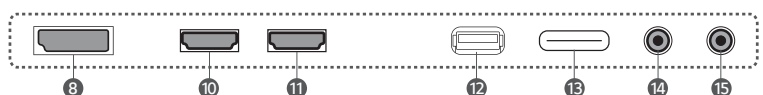


75UM3C

Bottom



Side



Specifications

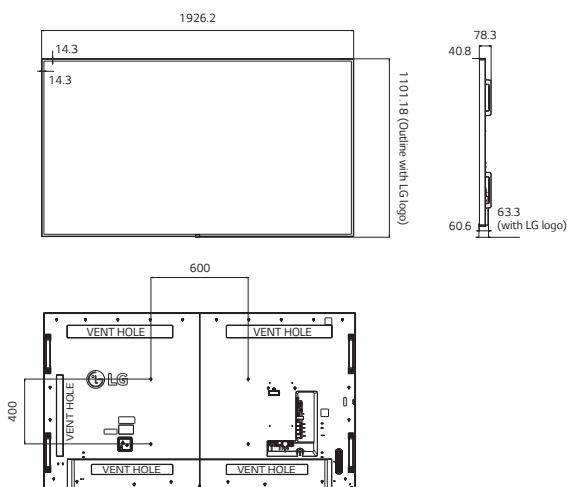
UM3C Series		86UM3C	75UM3C
PANEL	Screen Size	86" (87.35" diagonal)	75" (76.33" diagonal)
	Panel Technology	IPS	IPS
	Aspect Ratio	16 : 9	16 : 9
	Native Resolution	3,840 x 2,160 (UHD)	3,840 x 2,160 (UHD)
	Brightness	350cd/m ²	350cd/m ²
	Contrast Ratio	1,200:1	1,200:1
	Dynamic CR	500,000:1	2,000,000:1 (DTV Label only)
	Viewing Angle (H x V)	178 x 178	178 x 178
	Response Time	8ms (G to G)	6ms (G to G)
	Surface Treatment	Low Haze 3%	Low Haze 3%
	Life time (Min.)	30,000 Hrs	50,000 Hrs
	Guaranteed Operation Hours	16 Hrs	24 Hrs
Orientation	Landscape	Portrait & Landscape	
CONNECTIVITY	Input	HDMI(3), DP, DVI-D, Audio, USB 3.0, SD Card	HDMI(2), DP, DVI-D, Audio, USB 3.0, SD Card
	Output	DP, Audio (Fixed Level)	DP, Audio (Fixed Level)
	External Control	RS232C, RJ45, IR Receiver, Pixel Sensor	RS232C, RJ45, IR Receiver, Pixel Sensor
PHYSICAL SPECIFICATION	Bezel Color	Black	Black
	Bezel Width	On: 15.6mm, Off: 14.3mm	On: 15.8mm, Off: 14.9mm
	Monitor Dimension (W x H x D)	1,926.2 x 1,097.2 x 60.6mm / 75.83 x 43.20 x 2.39 in (without logo & handle)	1,682.37 x 960.3 x 57.9mm / 75.83 x 43.20 x 2.39 in (without logo & handle)
	Weight (Head)	49kg / 108.03 lbs	41.5 kg / 91.49 lbs
	Carton Dimensions (W x H x D)	2,073 x 1,260 x 292mm / 81.61 x 49.60 x 11.50 in	1,816 x 1,123 x 228mm / 71.5 x 44.21 x 8.98 in
	Packed Weight	61.1kg / 134.70 lbs	49kg / 108.03 lbs
VESA™ Standard Mount Interface	600 x 400mm	600 x 400mm	
SPECIAL FEATURES	Temperature Sensor, Auto Brightness Sensor, Tile Mode (up to 15x15), Natural Mode@Tile Mode, ISM Method, Internal Memory (8GB, System 4GB), Wi-Fi built-in (802.11n), USB Cloning, Content Scheduling, Sync mode, PM mode, Fail Over, Wake on LAN, BEACON (On/Off), Embedded Template, PIP/PBP (2/3/4)		
ENVIRONMENT CONDITIONS	Operation Temperature Range	32° F to 104° F	32° F to 104° F
	Operation Humidity Range	10 % to 80 %	10 % to 80 %
POWER	Power Supply	100-240V~, 50/60Hz	100-240V~, 50/60Hz
	Power Type	Built-In Power	Built-In Power
	Power Consumption Typ. Smart Energy Saving	315W 220W	160W 115W
STANDARD (CERTIFICATION)	Safety	UL / cUL / CB / TUV / KC	UL / cUL / CB / TUV / KC
	EMC	FCC Class "A" / CE / KCC	FCC Class "A" / CE / KCC
MEDIA PLAYER COMPATIBILITY	ErP / Energy Star	No / No	No / No
COMPATIBILITY	OPS type compatible	Yes	Yes
SOUND	External Media player Attachable	Yes (MP500 / MP700)	Yes (MP500/MP700)
SOFTWARE COMPATIBILITY	Speakers	Yes - 2 x 10W	Yes - 2 x 10W
COMPATIBILITY	Content Management Software	SuperSign W	SuperSign W
ACCESSORIES	Control and Monitoring Software	SuperSign C	SuperSign C
ACCESSORIES	Basic	Remote Controller (include battery 2ea), Power Cord, QSG, DP cable (2.6M), Regulation Book, Phone to RS232C Gender, Memory Cover	Remote Controller (include 2ea batteries), Power Cord, QSG, DP Cable (1.8M), Regulation Book, Phone to RS232C Gender, Memory Cover
	Optional	Pixel Sensor (KT-SPO), Media Player, OPS Kit (KT-OPSA), HDBaseT (EB-B100), LSW640A/B(Wall Mount)	Pixel sensor (KT-SPO), Media player, OPS Kit (KT-OPSA), HDBaseT (EB-B100)

Dimension

86"

1,926.2 x 1,101.2* x 63.3*mm, 75.83 x 43.20 x 2.39 in / 49kg, 108.03lbs (Without handle)
1,926.2 x 1,101.2* x 78.3*mm, 75.83 x 43.20 x 3.08 in (With handle)

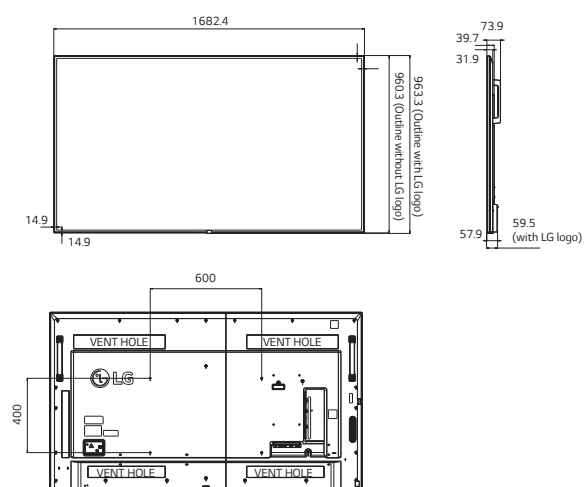
*With LG logo



75"

1682.4 x 963.3* x 59.5*mm, 75.83 x 43.20 x 2.39 in / 41.5kg, 91.49 lbs (Without Handle)
1682.4 x 963.3* x 73.9*mm, 75.83 x 43.20 x 2.9 in (With Handle)

* With LG logo



- <http://www.lg.com/us/business/commercial-display>
- <http://www.twitter.com/LGCommDisplays>
- <http://www.facebook.com/LGcommercialdisplays>
- <http://www.linkedin.com/company/lg-commercial-displays-usa>
- <http://www.youtube.com/lgcommercialdisplayusa>

LG may make changes to specifications and product descriptions without notice. Copyright © 2018 LG Electronics Inc. All rights reserved.
"LG Life's Good" is a registered trademark of LG Corp. The names of products and brands mentioned here may be the trademarks of their respective owners.
SPEC_UM3C_041803_PR

